

Mostly if the heating does not work properly in the beginning of the heating season or if you only have cool water for showering, this is how you can fix it:

How to generally turn on the heating in the flat:



STEP 1:

Activate the heating at the boiler so that the radiator symbol is activated (the pictures here are examples, so it might look a bit different on your boiler).



STEP 2:

Open all radiators (the knobs can be turned open) and set it to medium (depending on how much you open it, the radiator will get warmer or stay colder).



STEP 3:

Activate the right settings at the thermostat of the flat. The setting should be 21/22 degrees Celsius. Depending on the temperature that is set here, the radiators will start to heat if the temperature in the flat drops below the temperature that was set.

If this doesn't work, then please check page 2

If your radiators still stay cold after turning on the boiler and the radiators and setting the thermostat of the flat to the right temperature, this will help:

The boiler pressure should be between 1 and 2 bar:



When at this point there's not enough pressure



When the radiators are cold this is normal pressure



When the radiators are hot this is normal pressure



When at this point there's too much pressure

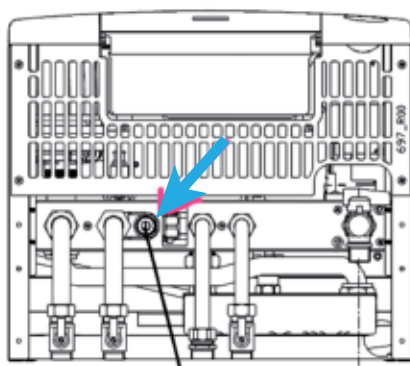
Most of our flats are heated with a gas boiler. If there is too little pressure in the boiler, this can cause problems with heating the water.

Please have a look at the water pressure. It should be between 1-2 bar. If the pressure gets too low the boiler shuts off for security reasons. You can raise the water pressure with a tap underneath the boiler.



Increase the boiler pressure by opening one or two taps (depending on your boiler) to 45 degrees, letting cold water into the system. Be sure to do this slowly to avoid adding too much pressure.

Continue filling with cold water until the pressure rises to between 1 and 1.5 bars, which is in the green zone on the pressure gauge.



The picture that you see above is from one of our flats. The boiler in your apartment can look differently though.

Anyway the pressure tap must be located somewhere central at your boiler as shown in the graphic to the left.

If the radiator in your room is still not heating, you might need to „bleed“ it to get the air out of the heating circuit.



Bleeding with flathead screwdriver

Sometimes if there is too little warm water coming through your room radiator, the problem can be that there is air in the heating circuit. In that case you might hear some noises from the radiator and you need to bleed it.

This can be done with a flathead screwdriver or a special „radiator key“ that you can get in every hardware store.



Radiator keys

A video how to bleed your room radiator you can find here:

<https://youtu.be/89IrdJI-XRM>